

# DFU update troubleshooting manual

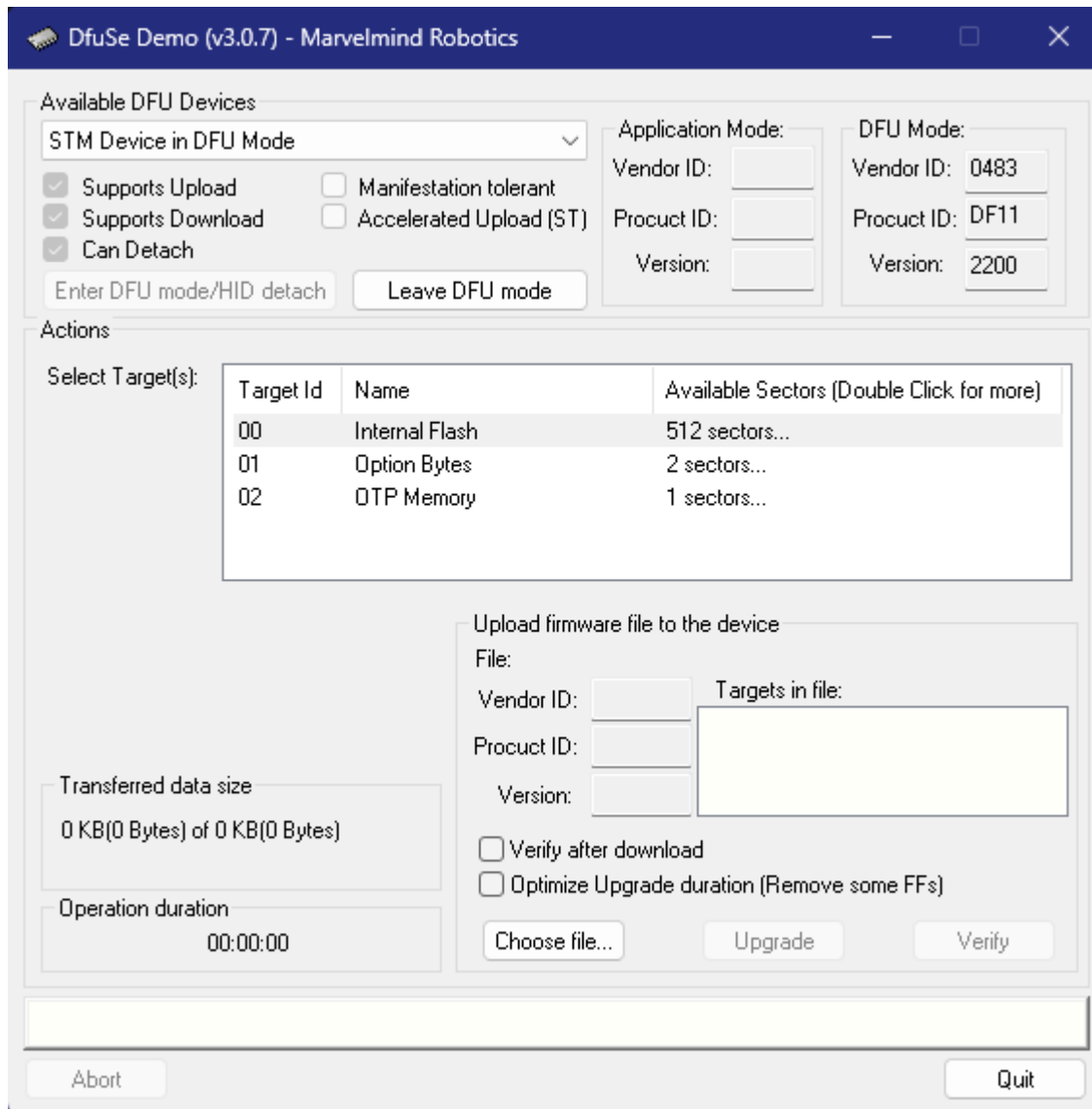
v2025\_10\_03

[www.marvelmind.com](http://www.marvelmind.com)

# 1. Introduction

This document is made to describe solutions to fix DFU updating. Further will be described possible solutions if you are getting an empty DfuSe demo with a connected Beacon or Modem in a DFU mode, as shown in the picture below. Instructions on how to fix this error will be presented after the screenshot.

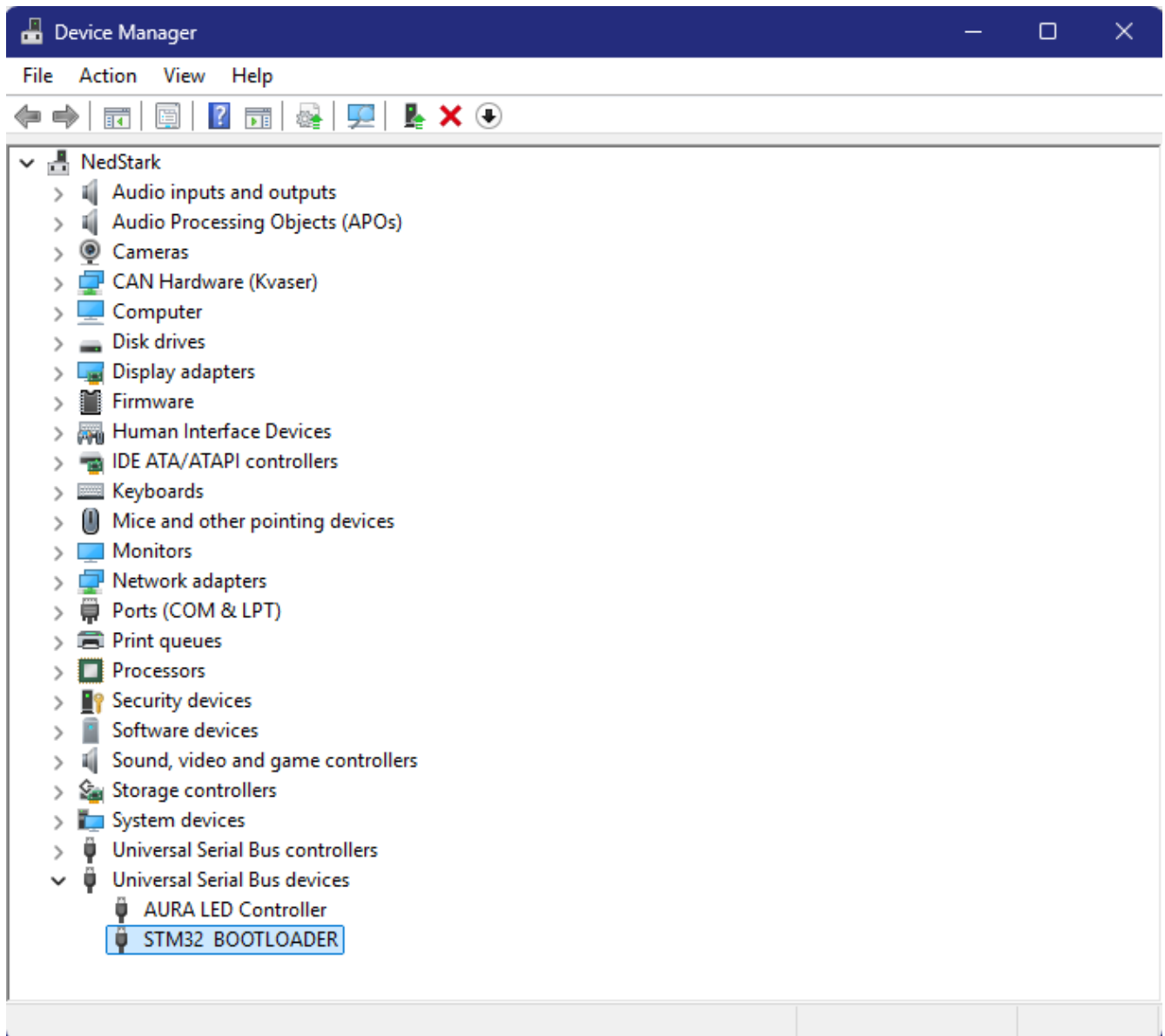
Starting from v3.0.7, we provide DfuSe Demo compiled by Marvelmind Robotics with improved GUI. There are also older versions of DfuSe Demo made by STMicroelectronics, such as v3.0.4, 3.0.5, 3.0.6 which can be used, based on your preference. For more information check [DFU page](#) on our website.



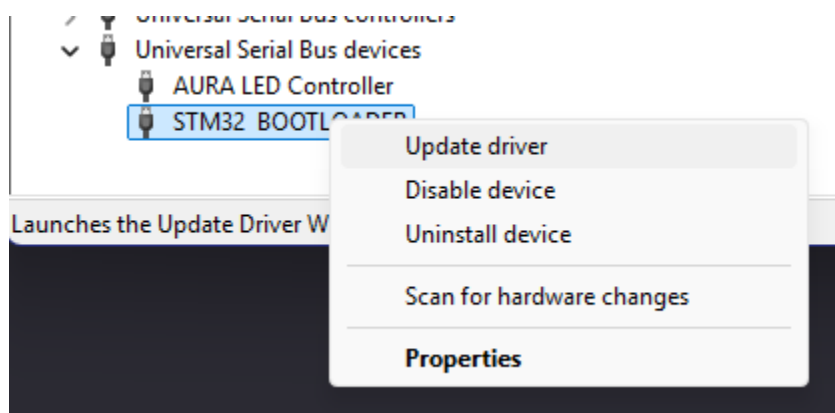
## 2.1 Updating "STM32 Bootloader" driver

Dfuse installation:

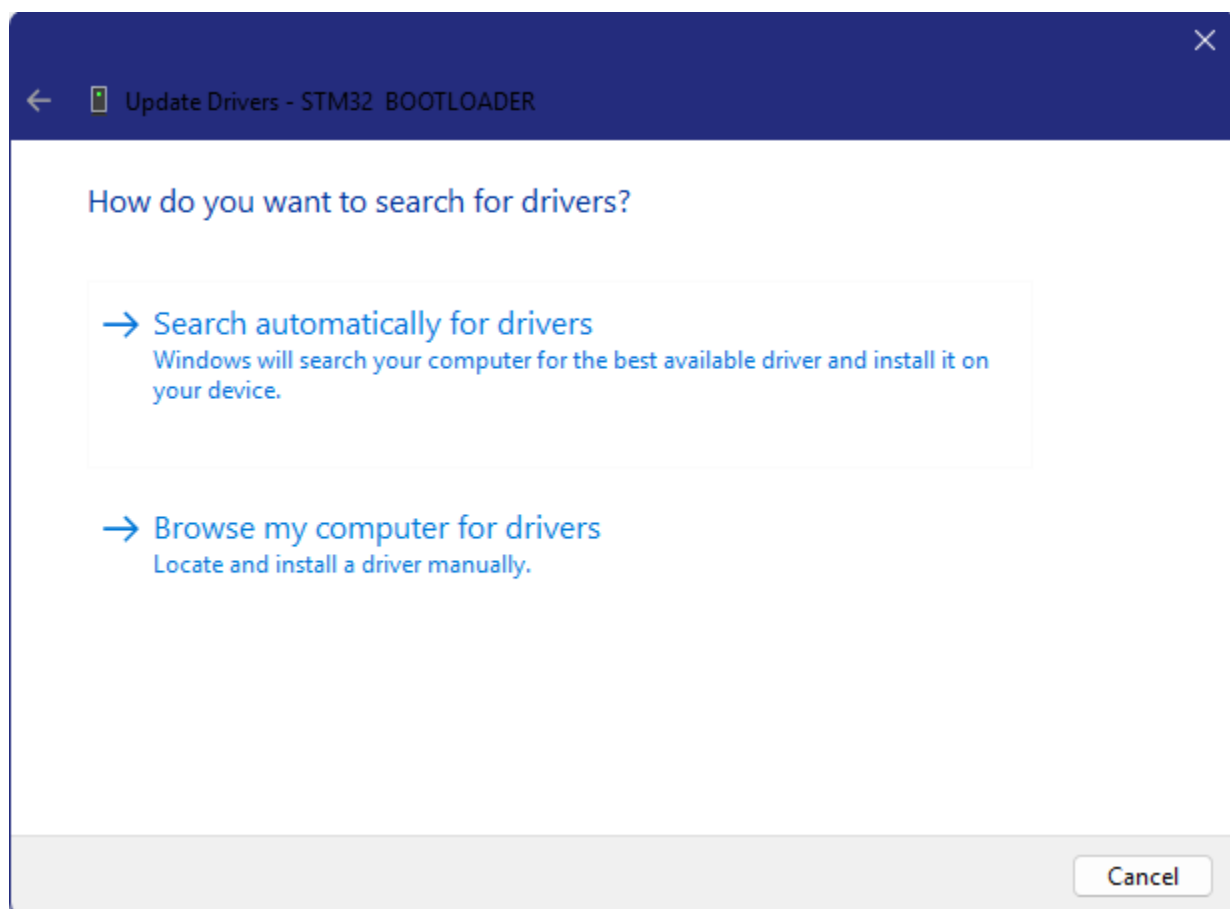
1. Open DfuSe Marvelmind from our software package
2. Select DFU mode on the beacon by the dip switch and connect it via USB to the PC
3. Open device manager
4. Right-click on the 'STM32 BOOTLOADER'



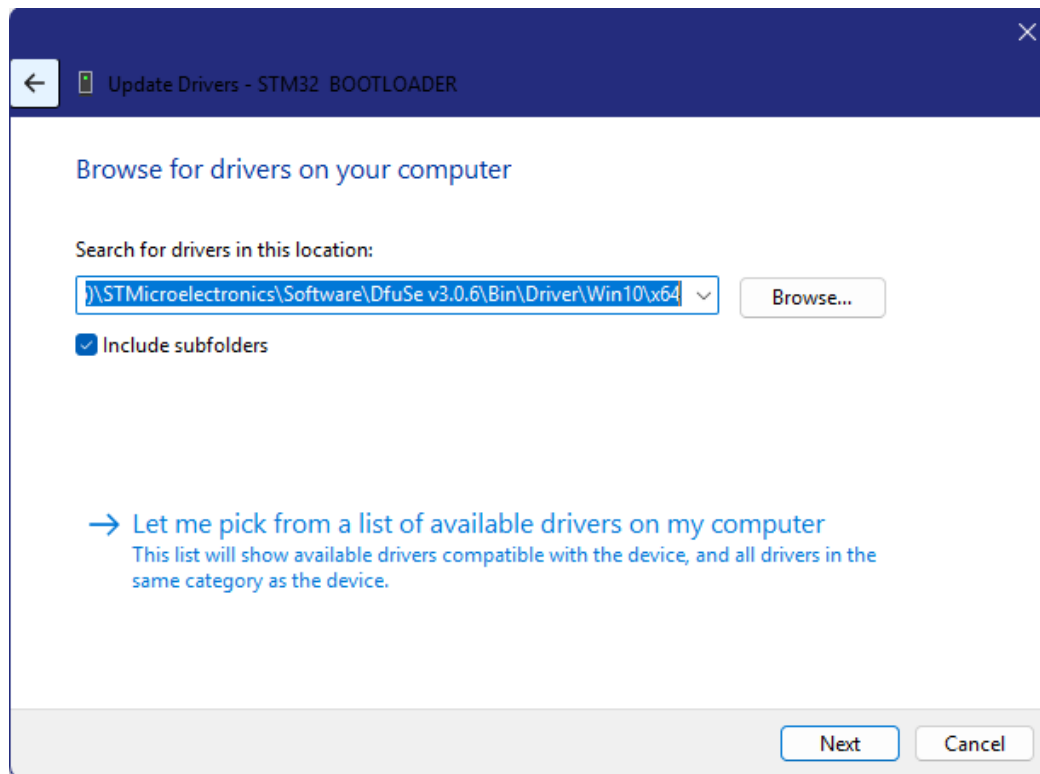
5. Press "Update driver"



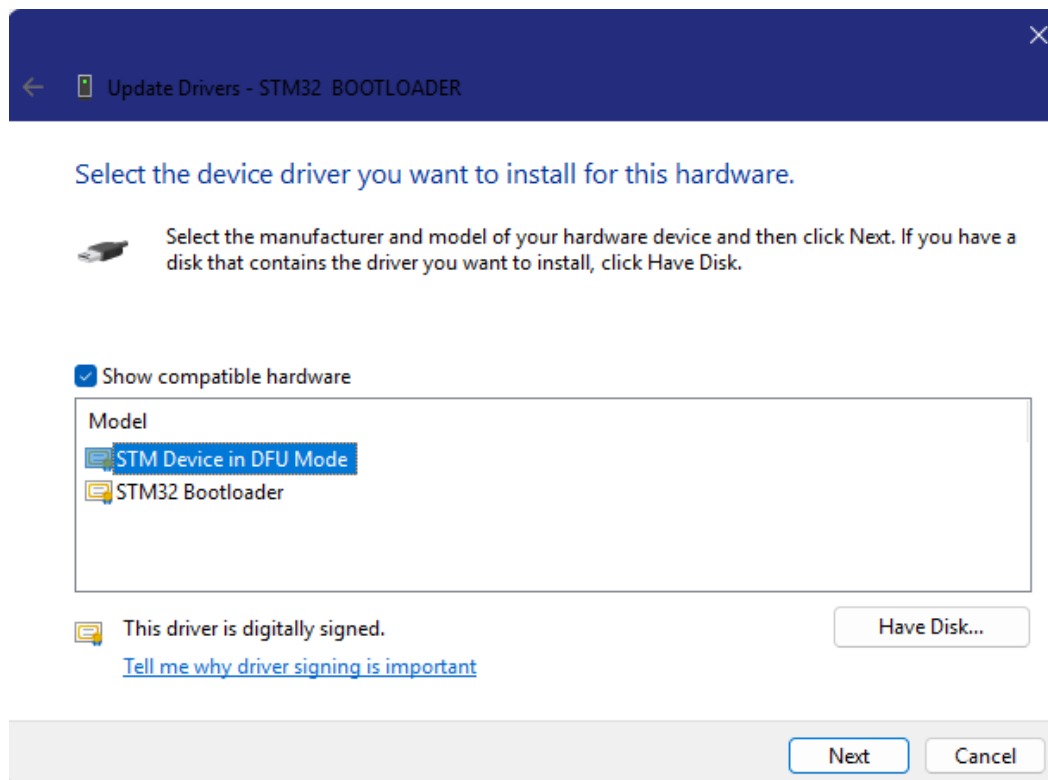
6. Select 'Browse my computer for a driver'



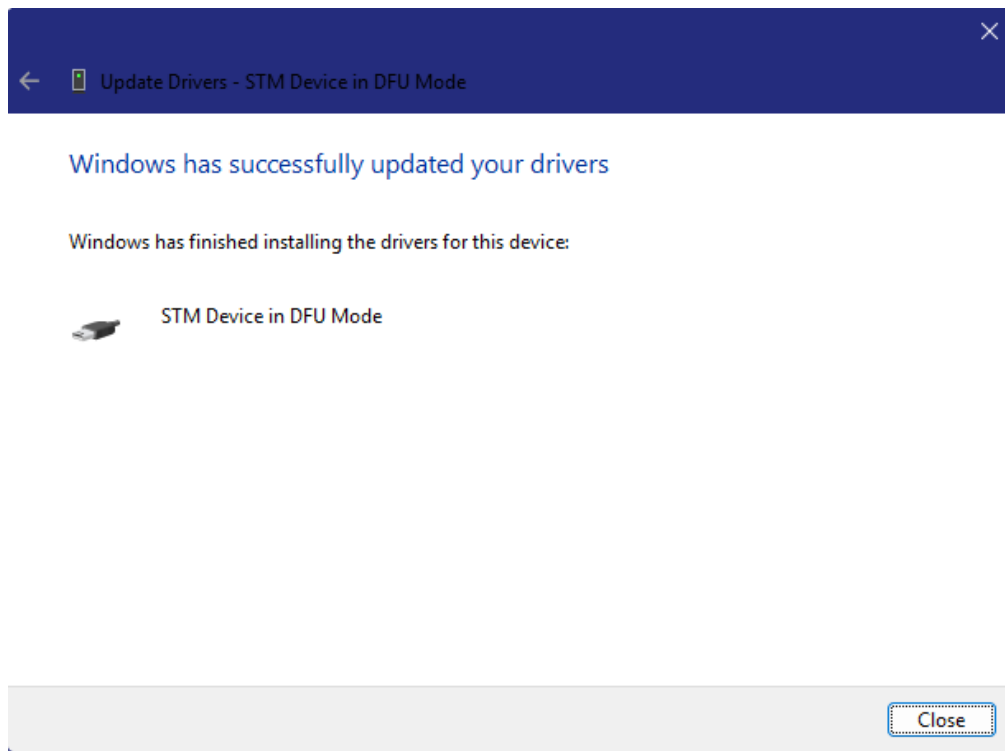
7. Press “Let me pick from a list of available drivers on my computer”



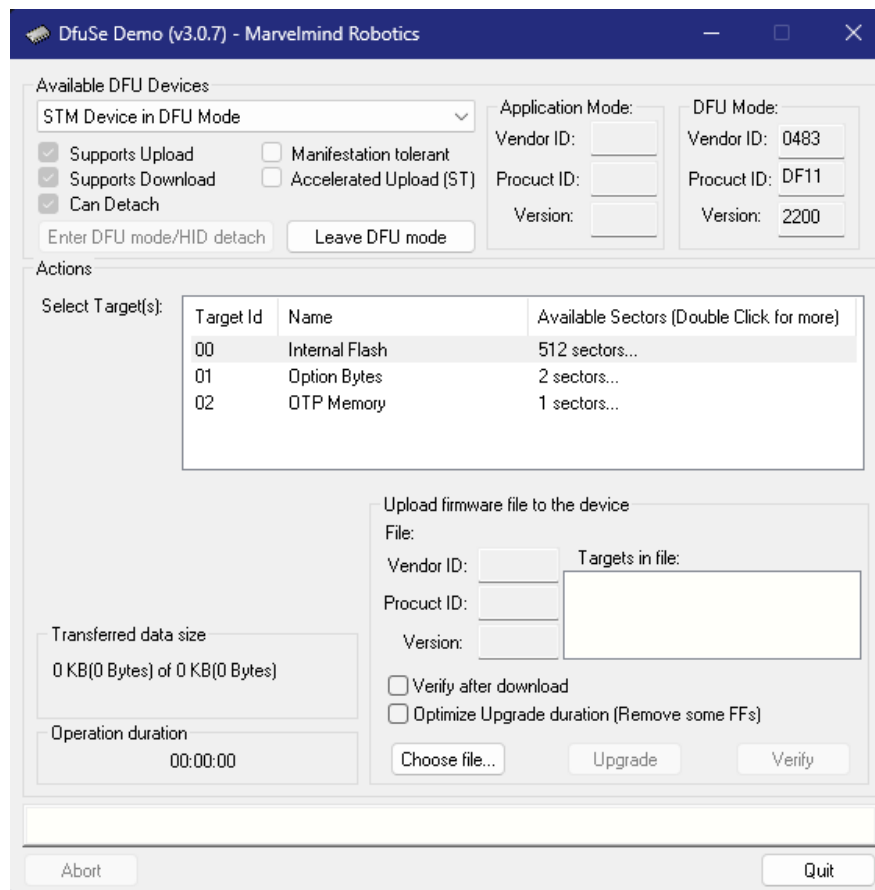
8. Select “STM Device in DFU Mode” and press next



9. After that the correct setting will be installed



10. In DfuSe Marvelmind the device will appear



## 2.2 Trying different USB cables or different PC

Sometimes there might be a conflict between the STM32 driver and Windows that can't be fixed. We recommend trying a different PC.

Also, don't forget that not all USB cables are applicable for updating, only for power charging. We recommend using a different USB cable in case it is not applicable for updating or broken.

### 3. Contacts

For more information about the company, check [about us](#)

For additional support, please send your questions to [info@marvelmind.com](mailto:info@marvelmind.com)